

NAME \_\_\_\_\_

# Showing Christ's LOVE

Matthew 1:18-25; Luke 2:1-11 (Jesus Is Born)

## MEMORY VERSE

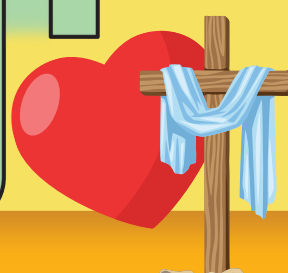
"For God so loved the world that He gave His only begotten Son, that whoever believes in Him should not perish but have everlasting life" (John 3:16).



## Why Jesus Came

Why was Jesus born? Find the right path to discover the reason. Write the letters you find in order in the blanks.

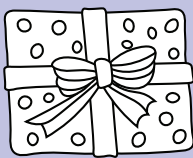
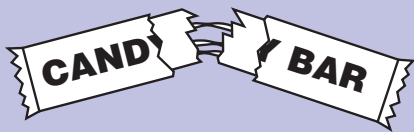
Jesus I \_\_\_\_\_ ed us and came to \_\_\_\_\_ sc \_\_\_\_\_ us from \_\_\_\_\_ n.



# What Would You Do?

Jesus wants you to show His love to others. Read each situation, then choose one of them. How could you show Jesus' love in that situation? In the space below, draw or write what you would do or say.

The pictures provide hints of what could be good choices. Color the pictures.



1. Your next-door neighbor is an older man. His wife died last week.
2. Your friend does not know anything about Jesus.
3. You are in a store. A woman riding in a motorized cart reaches for an item and knocks several boxes off the shelf.
4. Your classmate dropped his snack on the ground. There aren't any extras.



# Invisible Messages

Ask your parents to help you make invisible ink.

You will need:



2 bowls



1/4 cup water



1/4 cup baking soda



Spoon



Cotton swab



White paper



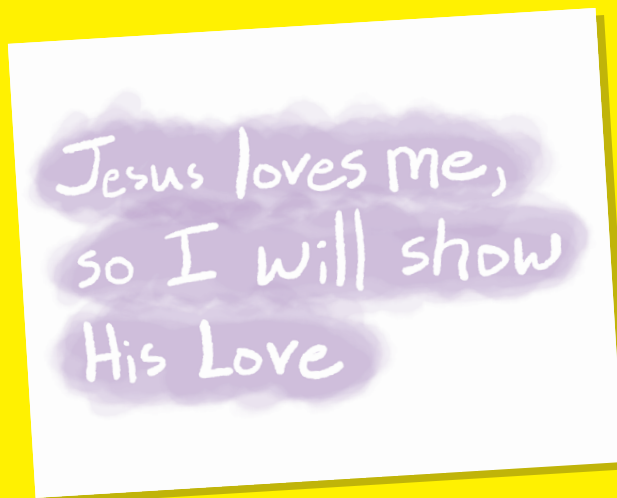
Watercolor paintbrush



Grape or cranberry juice

In one bowl, mix the baking soda and water with a spoon. Dip a cotton swab in the mixture and use the swab to write a message about Jesus' love, like "Jesus loves me, so I will show His love!" Let the paper dry completely. Fill the second bowl with juice. Dip a paintbrush into the juice and paint over the paper to reveal the message.

Use your invisible message to tell a friend about Jesus' love.



# FUN FACTS

Shepherds sometimes use llamas to guard their sheep. The sheep can depend on the llamas to protect them. Did you know that Jesus calls Himself the Good Shepherd? When we believe in Him, we are His sheep. We can always depend on Jesus!

