



AN EXTRAORDINARY PLAN

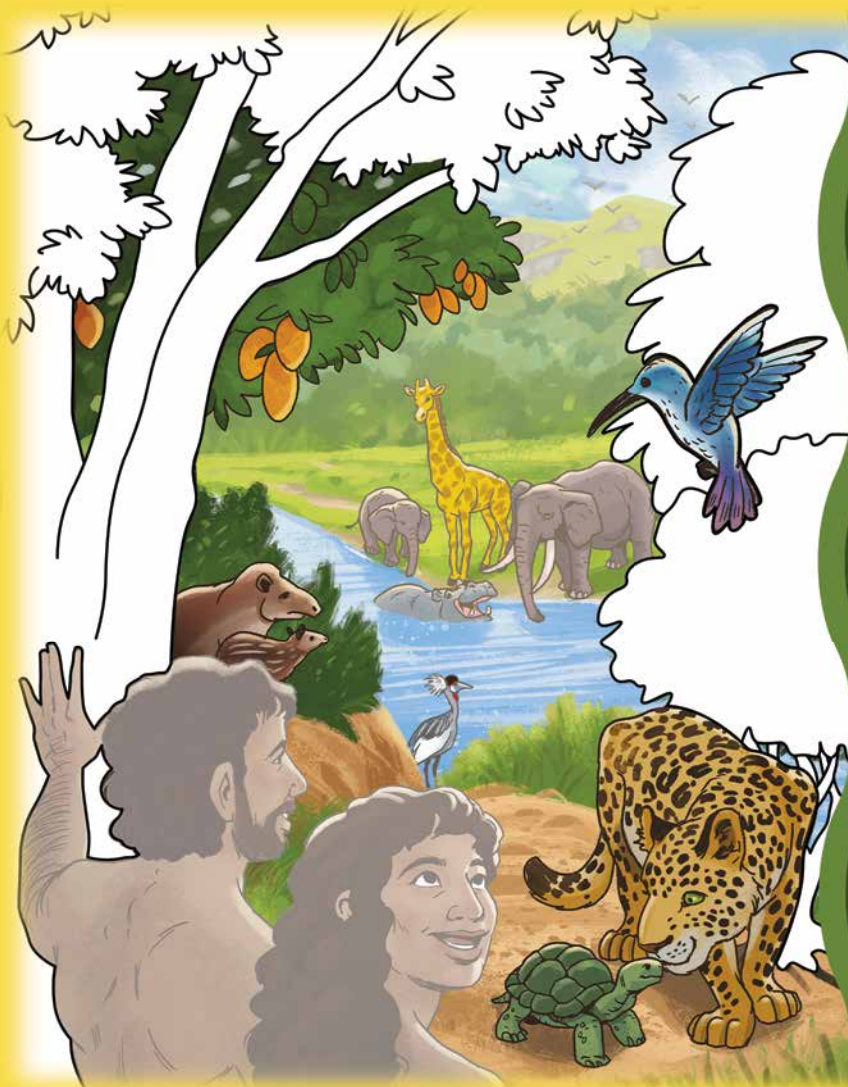
God's Word Anticipates Jesus

Genesis 1—3, esp. Genesis 3:15; Micah 5:2; Isaiah 53:1—12



MEMORY VERSE

“Thanks be to God for His
indescribable gift!”
(2 Corinthians 9:15).



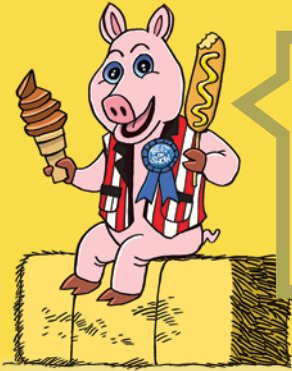
God's Promise

God made Adam and Eve. He gave them a beautiful place to live. Even though Adam and Eve disobeyed God, God still loved them. He promised that He would send Jesus someday!

Add the sticker of Adam and Eve.
Color the trees.



Find the Ferris Wheel



Hey, kids! Can you help this family find the Ferris wheel? Use a crayon or your finger to follow the path.



Shapes at the Fair

God made the world with many wonderful things to see and do. This fair has many things to see with lots of different shapes. Can you find the shapes that are hidden in the picture? Add the sticker of a pony ride.

A square



A rectangle



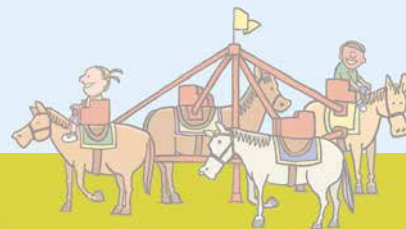
A triangle



A star



A circle

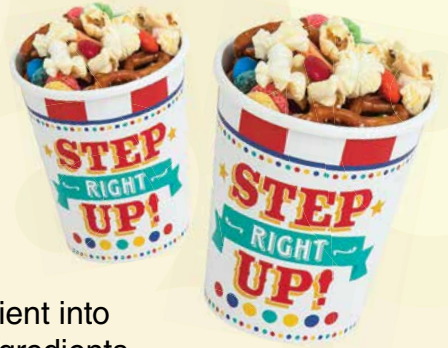


Fairground Snack

You'll need a snack when you go to the fair. This is a good snack to take with you!

You will need:

- Sweet, crunchy cereal
- Popcorn
- Chocolate candies
- Pretzel sticks or mini pretzels



Pour 1 cup of each ingredient into a large bowl. Stir all the ingredients together. Store the snack mix in an airtight container.

Finish the Pattern

This Ferris wheel has eight carts. The carts' colors form a pattern. Add the **blue** cart and **green** cart stickers to finish the color pattern.



God's Gift to Me

Sing the following song with a grown-up.
Sing the words to the tune of "Jesus Loves Me."



God sent Jesus,
His own Son,

(Make the sign for "Jesus.")



He's the promised
Savior,

(Make the sign for "Jesus.")



From Heaven to
Earth—

*(Point up, then move hand
down.)*



He's the promised
Savior,

He's the promised
Savior,

The Promised One!

He came to save
us from our sin,

If we will believe in
Him.

(Make the sign for "Jesus.")



The gift from God to me.

*(Point to the sky, then point
to yourself.)*



Add the
heart sticker.



Shapes at the Fair:



Finish the Pattern:
Answers: